



# Checklist - Chick processing and holding

This is the third checklist which we hope will be useful when investigating how well your hatchery is performing and where improvements might be made.

### CHICK PROCESSING

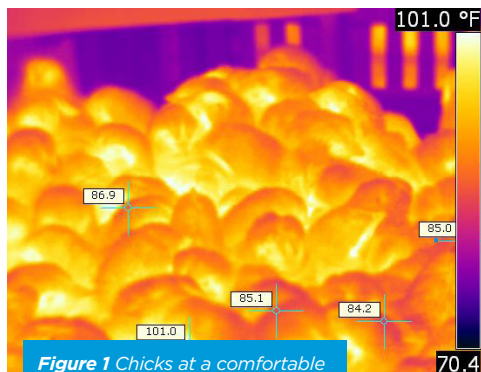
- If banger numbers are high, unload by hand to avoid spreading contamination.
- Check belts, conveyors, needles and other equipment daily to ensure chicks cannot be injured.
- Change vaccination needles every 1,000 chicks.

### CHICK HOLDING AND TRANSPORT

- Check chick vent temperatures (target 103-105 F) in different zones every hour. Alter room temperature set point as needed.
- Adjust room ventilation rate according to chick numbers (aim for <1,500ppm CO<sub>2</sub>).
- Do not place chicks beneath air inlets or in direct airflow; if they are in a draft they will become chilled.
- Plan delivery times to minimize holding duration and account for climate.
- Do not overload chick trucks.

### CHICK HOLDING ROOM VENTILATION

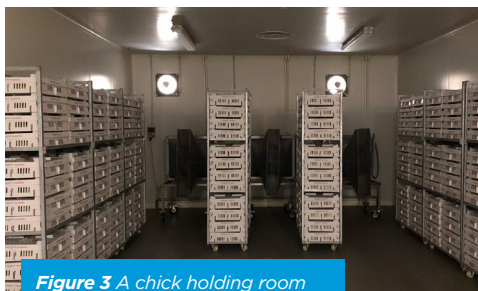
- Run the room at slightly negative pressure (not lower than -10pa).
- Distribute fresh air evenly and avoid temperature differences, drafts or fluctuations.
- Place stacks of boxes in an unbroken row (shown right) and use fans to create a steady air velocity in between the rows of chick boxes. This will help to maintain air speed and consistent heat removal.
- All roof circulation fans should work upward.



**Figure 1** Chicks at a comfortable temperature, no draft.



**Figure 2** Chilled chicks in a direct draft from a ceiling air inlet.



**Figure 3** A chick holding room with good layout and ventilation.